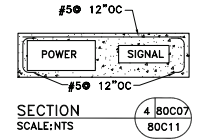
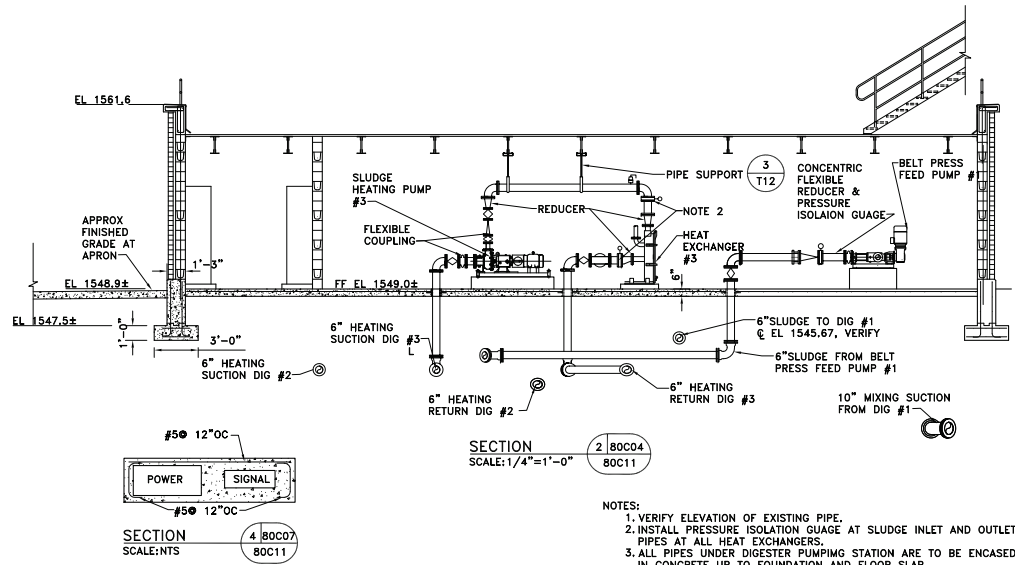
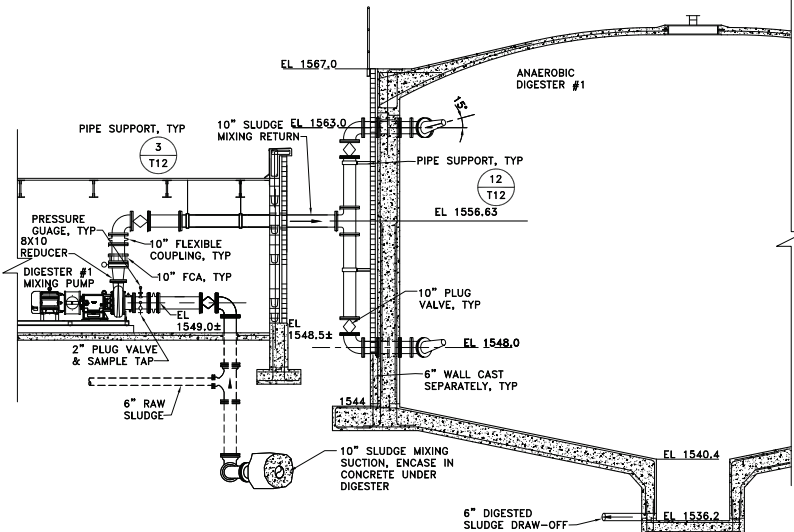
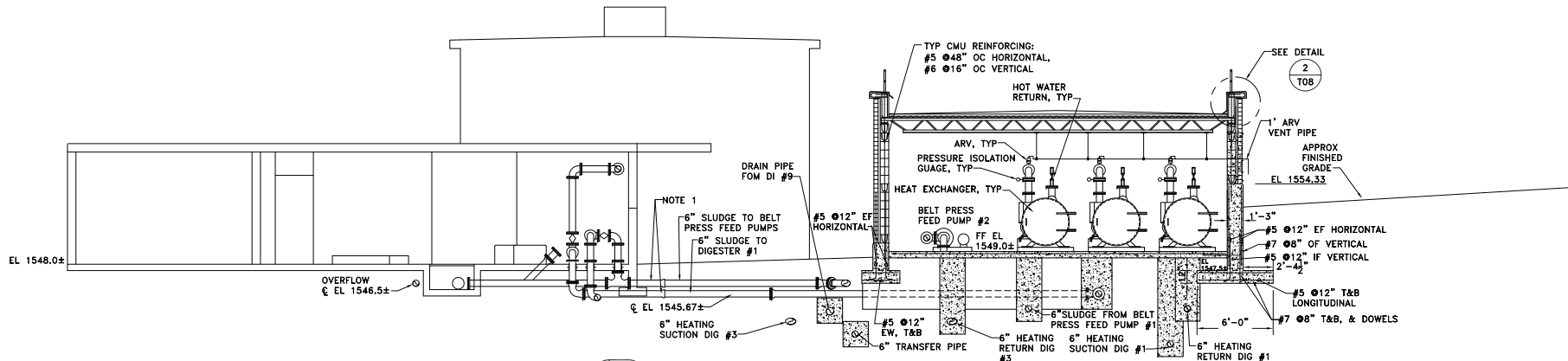


Filename: 243-80C11-prawing_sect.dwg, Plot: Three Jun 25, 2009 - 6:56pm

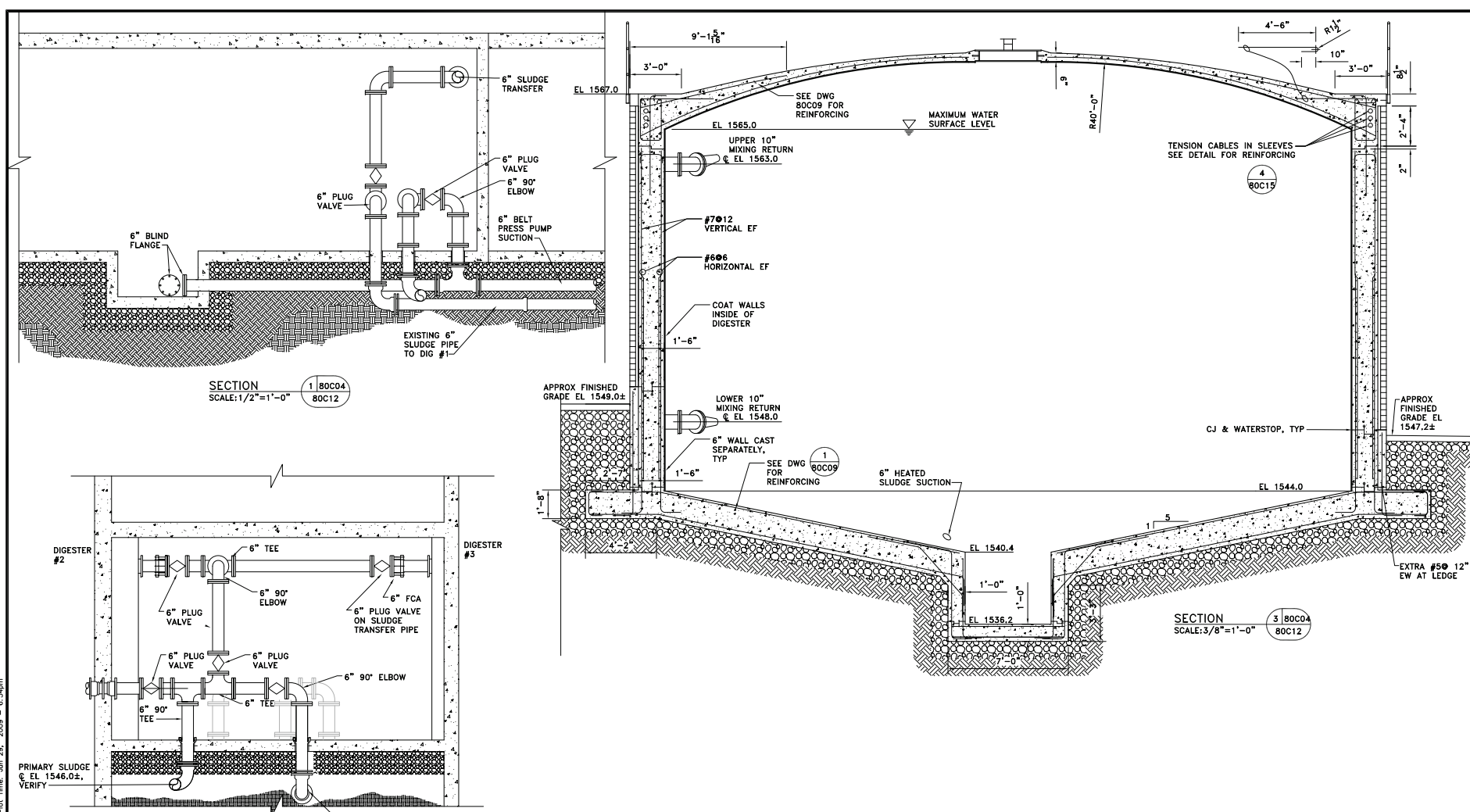


- NOTES:
1. VERIFY ELEVATION OF EXISTING PIPE.
 2. INSTALL PRESSURE ISOLATION GAUGE AT SLUDGE INLET AND OUTLET PIPES AT ALL HEAT EXCHANGERS.
 3. ALL PIPES UNDER DIGESTER PUMPING STATION ARE TO BE ENCASED IN CONCRETE UP TO FOUNDATION AND FLOOR SLAB.

NOTE: THESE ARE "RECORD DRAWINGS" SHOWN WITH FIELD CORRECTIONS AND CHANGES MADE DURING CONSTRUCTION.

	VERIFY SCALES: THIS BAR IS TWO INCHES ON THE ORIGINAL DWG.	Drawn by: RMC/JAC Checked by: WJO Approval date: 11/24/04 Issue for bids: 09/30/05 Issue for const: 03/10/06	© MARCH 2007 OWEN ENGINEERING ALL RIGHTS RESERVED THIS DOCUMENT AND THE IDEAS AND DESIGNS INCORPORATED HEREIN, AS AN INSTRUMENT OF PROFESSIONAL SERVICE, IS THE PROPERTY OF OWEN ENGINEERING AND IS NOT TO BE USED IN WHOLE OR IN PART WITHOUT THE WRITTEN AUTHORIZATION OF OWEN ENGINEERING.	OWEN ENGINEERING & Management Consultants, Inc. 3377 Coach Lane, Suite K Canton Park, CA 95062 5853 West Dartmouth Avenue, Suite 500 Denver, CO 80227
	REVISIONS 06/30/09 RECORD DRAWINGS	2005 FACILITY IMPROVEMENTS HANGTOWN CREEK WATER RECLAMATION FACILITY NEW ANAEROBIC DIGESTER SECTIONS 1		

File name: 243-80C12-primdg_sec2.dwg Plot Time: Jun 25, 2009 10:56am



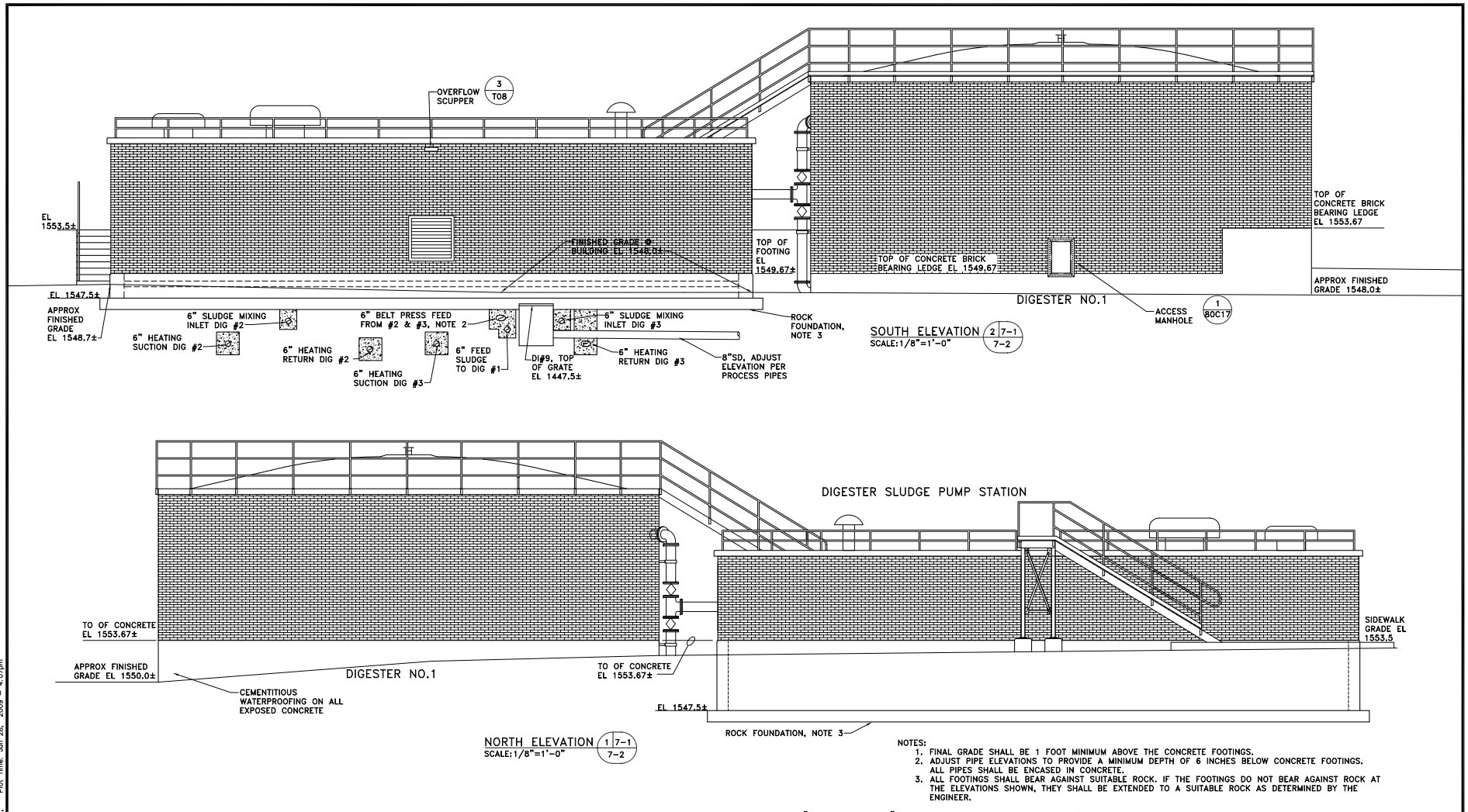
NOTE: THESE ARE "RECORD DRAWINGS" SHOWN WITH FIELD CORRECTIONS AND CHANGES MADE DURING CONSTRUCTION.



VERIFY SCALES: THIS BAR IS TWO INCHES ON THE ORIGINAL DWG. APPROVED FOR THE PROJECT J. OWEN PROFESSIONAL ENGINEER NO. 731319 EXP. 12/31/08 CIVIL STATE OF CALIFORNIA	Drawn by: RMC/JAC Checked by: WJO Approval date: 11/24/04 Issue for bids: 09/30/03 Issue for const: 03/10/06 REVISIONS 06/30/09 RECORD DRAWINGS	MARCH 2007 OWEN ENGINEERING ALL RIGHTS RESERVED THIS DOCUMENT AND THE IDEAS AND DESIGNS INCORPORATED HEREIN, AS AN INSTRUMENT OF PROFESSIONAL SERVICE, IS THE PROPERTY OF OWEN ENGINEERING AND IS NOT TO BE USED IN WHOLE OR IN PART WITHOUT THE WRITTEN AUTHORIZATION OF OWEN ENGINEERING.
---	---	--

OWEN ENGINEERING & Management Consultants, Inc. 3377 Coach Lane, Suite K Cameron Park, CA 95982		5353 West Dartmouth Avenue, Suite 500 Denver, CO 80227
2005 FACILITY IMPROVEMENTS HANGTOWN CREEK WATER RECLAMATION FACILITY		Project No. 02-243
NEW ANAEROBIC DIGESTER SECTIONS 2		Drawing No. 80C12 Sheet No. 182

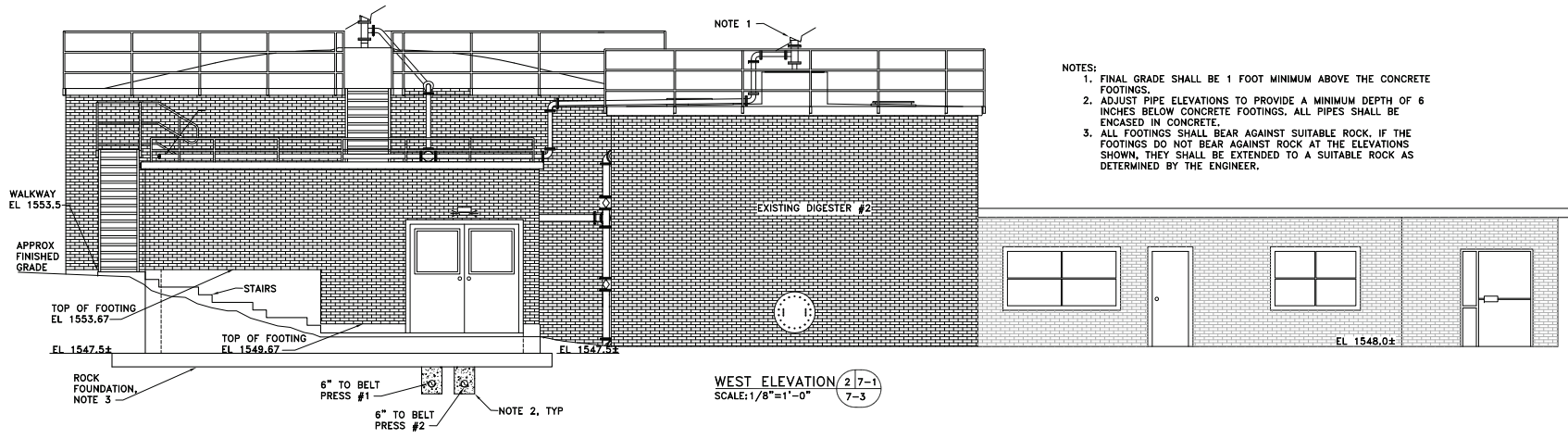
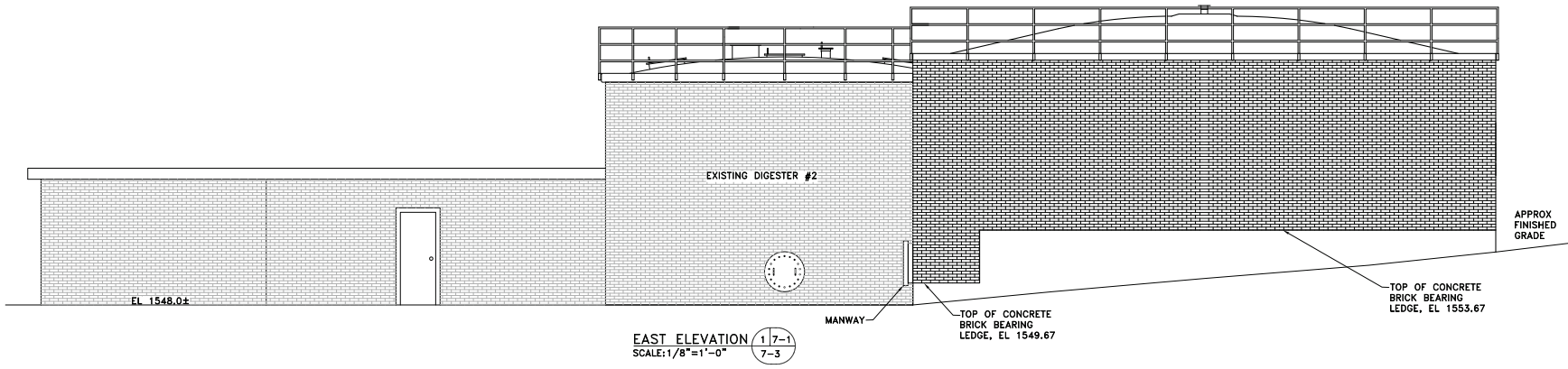
Filename: 243-80013-promo.dwg, Plot Time: Jun 26, 2009 - 4:07pm



- NOTES:
1. FINAL GRADE SHALL BE 1 FOOT MINIMUM ABOVE THE CONCRETE FOOTINGS.
 2. ADJUST PIPE ELEVATIONS TO PROVIDE A MINIMUM DEPTH OF 6 INCHES BELOW CONCRETE FOOTINGS.
 3. ALL PIPES SHALL BE ENCASED IN CONCRETE.
 4. ALL FOOTINGS SHALL BEAR AGAINST SUITABLE ROCK. IF THE FOOTINGS DO NOT BEAR AGAINST ROCK AT THE ELEVATIONS SHOWN, THEY SHALL BE EXTENDED TO A SUITABLE ROCK AS DETERMINED BY THE ENGINEER.

NOTE: THESE ARE "RECORD DRAWINGS" SHOWN WITH FIELD CORRECTIONS AND CHANGES MADE DURING CONSTRUCTION.

	VERIFY SCALES: THIS BAR IS TWO INCHES ON THE ORIGINAL DWG.	Drawn by: RMC/JAC Checked by: WJO Approval date: 11/24/04 Issue for bids: 09/30/05 Issue for contract: 03/10/06	© MARCH 2007 OWEN ENGINEERING ALL RIGHTS RESERVED THIS DOCUMENT AND THE IDEAS AND DESIGNS INCORPORATED HEREIN, AS AN INSTRUMENT OF PROFESSIONAL SERVICE, IS THE PROPERTY OF OWEN ENGINEERING AND IS NOT TO BE USED IN WHOLE OR IN PART WITHOUT THE WRITTEN AUTHORIZATION OF OWEN ENGINEERING.	
	REVISIONS 06/30/09 RECORD DRAWINGS	3377 Coach Lane, Suite K Cameron Park, CA 95902		
2005 FACILITY IMPROVEMENTS HANGTOWN CREEK WATER RECLAMATION FACILITY			Project No. 02-243	Drawing No. 80013 Sheet No. 183
NEW ANAEROBIC DIGESTER ELEVATIONS 1				

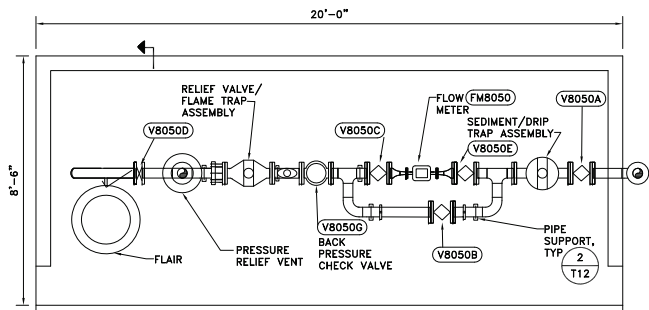


- NOTES:
1. FINAL GRADE SHALL BE 1 FOOT MINIMUM ABOVE THE CONCRETE FOOTINGS.
 2. ADJUST PIPE ELEVATIONS TO PROVIDE A MINIMUM DEPTH OF 6 INCHES BELOW CONCRETE FOOTINGS. ALL PIPES SHALL BE ENCASED IN CONCRETE.
 3. ALL FOOTINGS SHALL BEAR AGAINST SUITABLE ROCK. IF THE FOOTINGS DO NOT BEAR AGAINST ROCK AT THE ELEVATIONS SHOWN, THEY SHALL BE EXTENDED TO A SUITABLE ROCK AS DETERMINED BY THE ENGINEER.

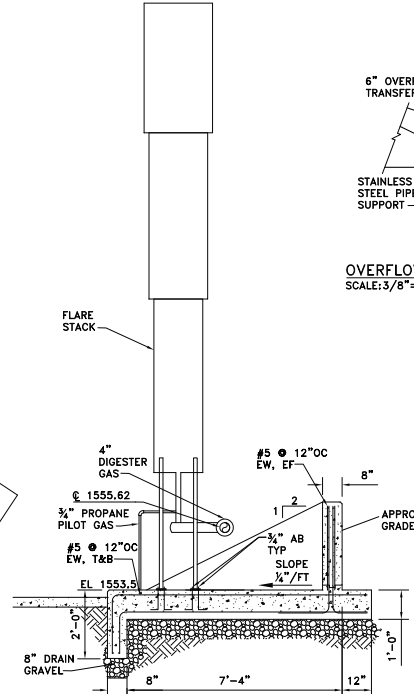
NOTE: THESE ARE "RECORD DRAWINGS" SHOWN WITH FIELD CORRECTIONS AND CHANGES MADE DURING CONSTRUCTION.

	VERIFY SCALES: THIS BAR IS TWO INCHES ON THE ORIGINAL DWG.	Drawn by: RMC/JAC Checked by: WJO Approval date: 11/24/04 Issue for bids: 09/30/05 Issue for contract: 03/10/06	© MARCH 2007 OWEN ENGINEERING ALL RIGHTS RESERVED THIS DOCUMENT AND THE IDEAS AND DESIGNS INCORPORATED HEREIN, AS AN INSTRUMENT OF PROFESSIONAL SERVICE, IS THE PROPERTY OF OWEN ENGINEERING AND IS NOT TO BE USED IN WHOLE OR IN PART WITHOUT THE WRITTEN AUTHORIZATION OF OWEN ENGINEERING.	OWEN ENGINEERING & Management Consultants, Inc. 3377 Coach Lane, Suite K Cameron Park, CA 95962 5353 West Dartmouth Avenue, Suite 500 Denver, CO 80227
		REVISIONS 06/30/09 RECORD DRAWINGS		

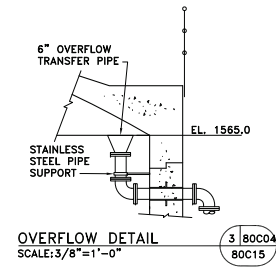
Filename: 243-80C15-prawing_dwg1.dwg, Plot Time: Jun 29, 2009 - 6:51pm



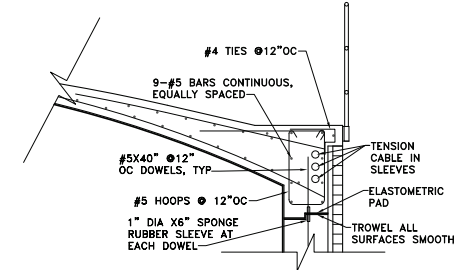
DETAIL
SCALE: 1/2"=1'-0"
1 Y07
80C15



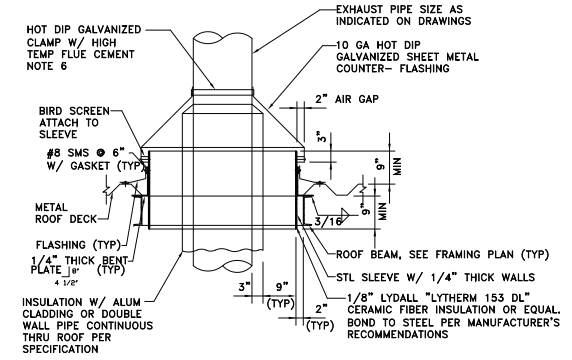
DETAIL
SCALE: 1/2"=1'-0"
2 80C15
80C15



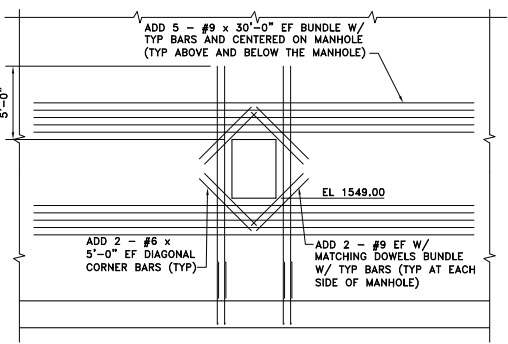
OVERFLOW DETAIL
SCALE: 3/8"=1'-0"
3 80C04
80C15



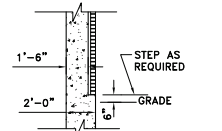
DETAIL
SCALE: 1/2"=1'-0"
4 80C09
80C12



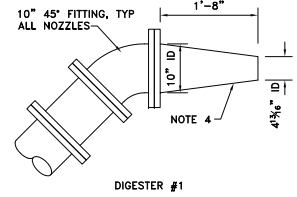
SECTION
SCALE: 3/4"=1'-0"
7 80C06
80C15



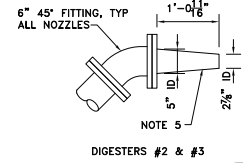
SECTION
SCALE: 1/4"=1'-0"
5 80C17
80C15



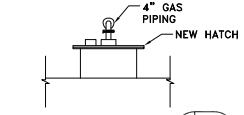
EXTERIOR WALL SECTION
SCALE: 1/4"=1'-0"
10 80C07
80C15



MIXING NOZZLE DETAIL
SCALE: 1"=1'-0"
11 80C04
80C15



MIXING NOZZLE DETAIL
SCALE: 1"=1'-0"
12 80C04
80C15



NEW HATCH DETAIL
SCALE: 1/4"=1'-0"
13 80C05
80C15

- NOTES:**
1. FOR DRAIN PIPE CONTINUATION SEE DWG Y11.
 2. PROVIDE 24" DIAMETER AREA SLOPED TO SLAB DRAIN, DIRECTLY UNDER DRIP TRAP. SLOPE AT 1/4" PER FOOT.
 3. MOUNT CONTROL PANEL ON 2-2"x2" UNISTRUT SUPPORTS.
 4. THESE DIMENSIONS ARE FOR THE TWO NOZZLES IN DIGESTER #1 ONLY.
 5. THESE DIMENSIONS ARE FOR THE FOUR NOZZLES IN DIGESTERS #2&3 ONLY.
 6. HOT-DIP GALVANIZE SUPPORTS

NOTE: THESE ARE "RECORD DRAWINGS" SHOWN WITH FIELD CORRECTIONS AND CHANGES MADE DURING CONSTRUCTION.



Drawn by:	RMC/JAC
Checked by:	WJO
Approval date:	11/24/04
Issue for bids:	09/30/05
Issue for const:	03/10/06
REVISIONS:	
06/30/09	RECORD DRAWINGS

© MARCH 2007
OWEN ENGINEERING
ALL RIGHTS RESERVED
THIS DOCUMENT AND THE IDEAS
AND DESIGNS INCORPORATED
HEREIN, AS AN INSTRUMENT OF
PROFESSIONAL SERVICE, IS THE
PROPERTY OF OWEN ENGINEERING
AND IS NOT TO BE USED IN WHOLE
OR IN PART WITHOUT THE WRITTEN
AUTHORIZATION OF OWEN
ENGINEERING.

OWEN ENGINEERING & Management Consultants, Inc.	
3377 Coach Lane, Suite K Cameron Park, CA 95982	535 West Dartmouth Avenue, Suite 500 Denver, CO 80227
2005 FACILITY IMPROVEMENTS HANGTOWN CREEK WATER RECLAMATION FACILITY	Project No. 02-243
NEW ANAEROBIC DIGESTER	Drawing No. 80C15
DETAILS 1	Sheet No. 185

